

Washington D.C., March 2001

CENTURY PARTY (Shirley's 60th & Tom's 40th)

Marriott where Bill stays when we're not with him.



The line for White House tours (over an hour before tours begin). We decided to forgo the tour.



Seat that used to be in the White House – now at the Visitor's Center

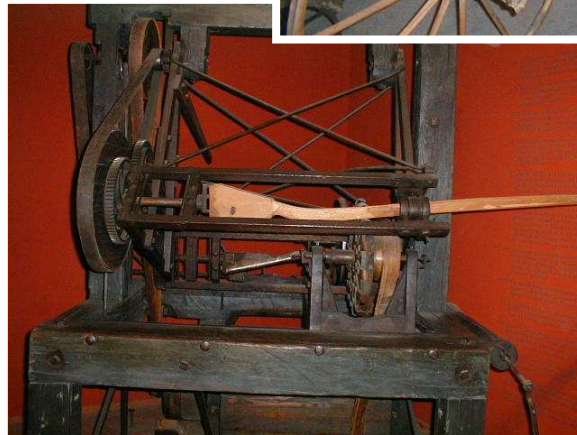
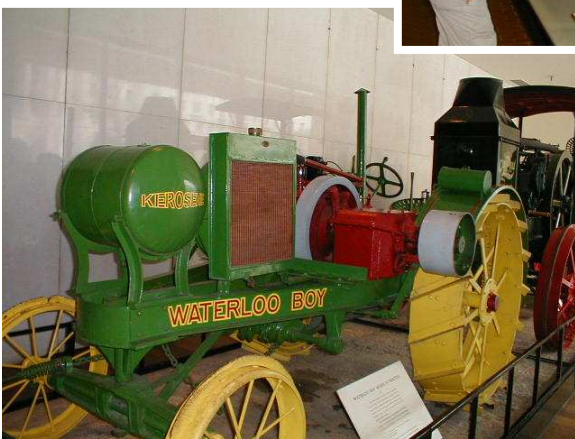
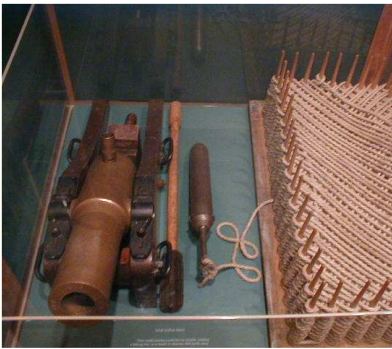
An archeological dig on the south side of the White House – maybe a Civil War era stable.



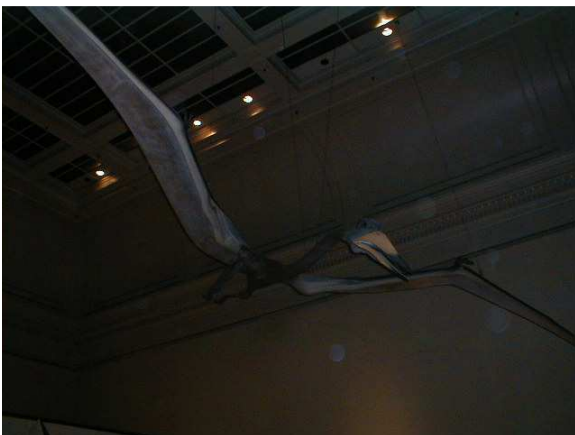
Shirley, Are you sure that is a cotton plant in front of the Agriculture Building?



Museum of American History



Museum of Natural History



Museum of Art



Air & Space Museum



Misc.



Bill's WOW Sandwich



Lincoln Memorial



Franklin Delano Roosevelt Memorial



Washington Monument



Jefferson Memorial



Korean War Veterans Memorial



Vietnam Veterans Memorial

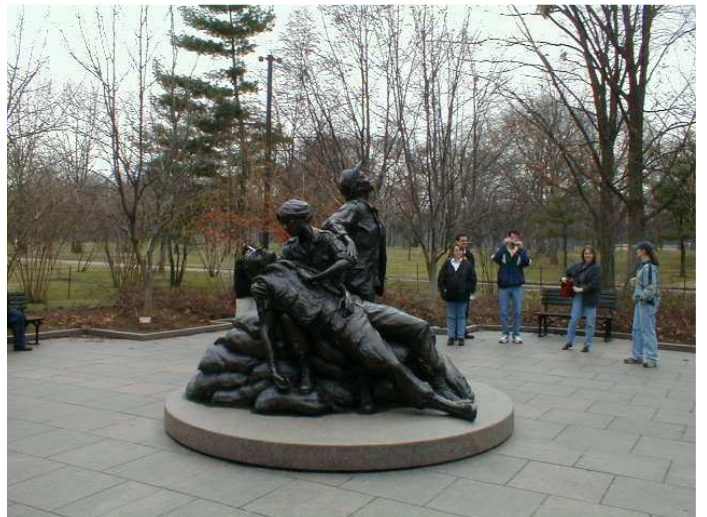


Washington D.C.

World War Memorial



Vietnam Women's Memorial



Bureau of Engraving



China Town



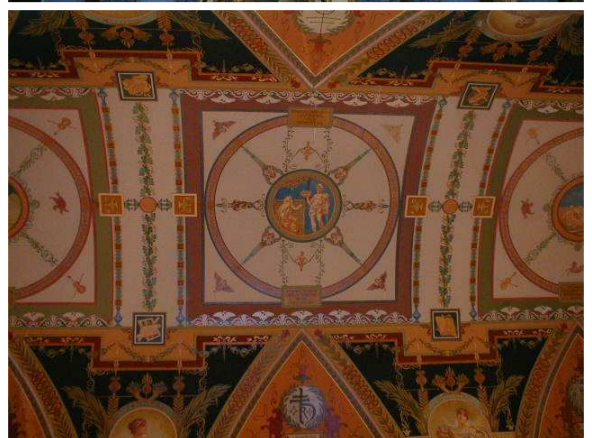
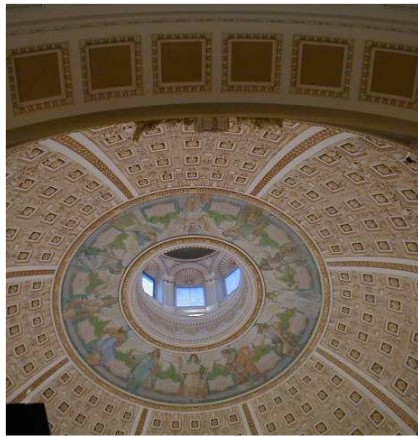
National Postal Museum



U.S. Capital



Library Of Congress



Arlington National Cemetery



Old Post Office Building (Federal Triangle)

